

Diaxinol

These statements have not been evaluated by the Food and Drug Administration. This product is not intended to diagnose, treat, cure, or prevent any disease. The information provided here is intended to help health care professionals make informed decisions about recommending this product safely and effectively.

Product #544

Supplement Facts		
Serving Size: 2 Capsules Servings Per Container: 30		
2 capsules contain	Amount Per Serving	% Daily Value
Biotin	3,000 mcg	1000%
Chromium (as ChromeMate®)	800 mcg	667%
Gymnema Leaf Extract (Standardized to contain 25% Gymnemic Acids)	400 mg	*
Lipoic Acid	300 mg	*
Cinnulin™ (Cinnamon Bark Extract)	150 mg	*
Vanadyl Sulfate Hydrate	50 mg	*

* % Daily Value not established

OTHER INGREDIENTS:

Natural Vegetable Capsules. This product may contain one or more of the following: Calcium Silicate, Magnesium Stearate, Microcrystalline Cellulose and Silicon Dioxide.

PRODUCT RATIONALE:

This product is a blend of natural extracts and vitamins intended to support healthy blood glucose levels already within normal range.

RESEARCH FINDINGS:

Lipoic Acid (1-6):

- Increase GLUT4 stimulated glucose transport independent of insulin (lowering plasma glucose levels)
- Has been shown to lower oxidative stress in diabetic patients.
- Used for the treatment of diabetic neuropathy- increases nerve conductivity.
- Prevents insulin sensitivity/"Syndrome X" in experimental animal models⁷.

Chromium (8-10):

- Studies now show that 4 chromium molecules are needed to fully activate the insulin receptor via a Chromium-binding protein called Chromodulin.
- A Chromium containing complex known as Glucose Tolerance Factor (GTF) has been identified for years to play a key role in insulin-dependent glucose uptake.
- Type II diabetics treated with 800-1000 mcg of Chromium were shown to have improved glucose tolerance and insulin sensitivity.
- 43 type two diabetes patients with impaired glycemic control taking antihyperglycemic agents, were given either 600 mcg of chromium picolinate and biotin 2 mg per day or placebo. After 4 weeks, there was a significantly greater reduction in the total area under the curve for glucose during the 2 hour oral glucose tolerance test¹⁷.

Biotin (11):

Biotin has been shown to:

- Accelerate glycolysis by enhancing glucokinase enzyme.
- Enhance glucose tolerance and insulin sensitivity.
- Prevent potential biotin-carboxylase interference due to high lipoic acid intake.

Vanadyl Sulfate (VS)(12-14):

- Increases GLUT-4 synthesis and mobilization to cell surfaces- increasing glucose transport
- Improves Muscle cell sensitivity to Insulin
- 100 mg/day of VS was able to improve insulin sensitivity (fasting plasma glucose and HbA1c) in non-insulin dependant diabetic patients, but had no effect on obese non-diabetic patients.

Gymnema Extract (15-16):

- Ayurvedic (Indian) herb used for high blood sugar for thousands of years.
- Blocks sweetness (tongue), some absorption of glucose (intestines) and has stimulatory function on Pancreatic Beta Cells- perhaps by stimulating insulin
- Does not seem to have effect on normo-glycemic individuals.
- 400 mg Extract given to 22 Type 2 diabetics (18-20 months) reduced need for oral hypoglycemic drugs (5 ceased completely) while reducing levels of plasma glucose and HbA1c.

Cinnulin PF:

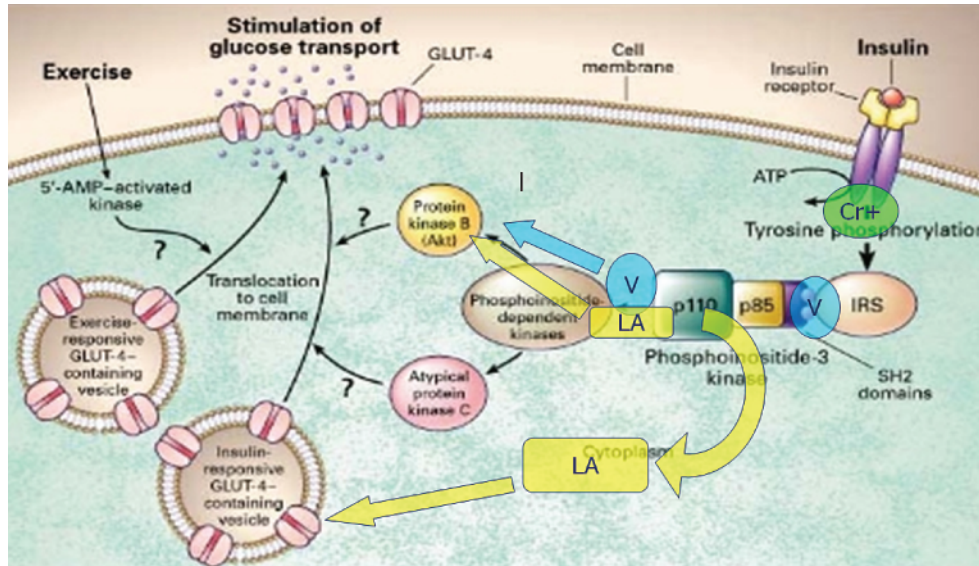
- Cinnulin PF is the only patented aqueous cinnamon extract produced from a superior source of cinnamon bark, having the highest concentration of active Type A Polymers.
- 24 pre-diabetic (FBG=100-126 mg/dL) men and women (30-60 yrs) were given 250 mg twice per day, Cinnulin or placebo. 83% of those receiving Cinnulin decreased their fasting blood sugar, compared to 33% in the placebo group. Small changes in body fat and lean mass were also observed in the Cinnulin group.¹⁸

DOSE:

1 capsule two times per day.

CONTRAINDICATIONS, ADVERSE OR OTHER REACTIONS:

Do not exceed recommended dose. While no specific interactions known, pregnant patients should be advised to wait until delivery before proceeding to take product. Mild stomach upset or allergic reaction may occur with any herbal product, move dose closer to meals/cease product if symptoms persist.



REFERENCES:

1. Jacob S et al. Oral administration of RAC-alpha-lipoic acid modulates insulin sensitivity in patients with type-2 diabetes mellitus: a placebo-controlled pilot trial. *Free Radic Biol Med* 1999; 27(3-4):309-14
2. Jacob S, Henriksen EJ, Tritschler HJ, Augustin HJ, Dietze GJ. Improvement of insulin-stimulated glucose-disposal in type 2 diabetes after repeated parenteral administration of thioctic acid. *Exp Clin Endocrinol Diabetes* 1996;104(3):284-8
3. Borcea V et al. alpha-Lipoic acid decreases oxidative stress even in diabetic patients with poor glycemic control and albuminuria. *Free Radic Biol Med* 1999; 26(11-12):1495-500
4. Ziegler D, Reljanovic M, Mehnert H, Gries FA. Alpha-lipoic acid in the treatment of diabetic polyneuropathy in Germany: current evidence from clinical trials. *Exp Clin Endocrinol Diabetes* 1999;107(7):421-30
5. Ruhnau KJ et al. Effects of 3-week oral treatment with the antioxidant thioctic acid (alpha-lipoic acid) in symptomatic diabetic polyneuropathy. *Diabet Med* 1999; 16(12):1040-3
6. Ziegler D et al. Treatment of symptomatic diabetic polyneuropathy with the antioxidant alpha-lipoic acid: a 7-month multicenter randomized controlled trial (ALADIN III Study). *ALADIN III Study Group. Alpha-Lipoic Acid in Diabetic Neuropathy. Diabetes Care* 1999; 22(8):1296-301
7. Midaoui AE et al. Lipoic acid prevents hypertension, hyperglycemia, and the increase in heart mitochondrial superoxide production. *Am J Hypertens.* 2003 Mar; 16(3): 173-9
8. Anderson RA et al. Elevated intakes of supplemental chromium improve glucose and insulin variables in individuals with type 2 diabetes. *Diabetes* 1997; 46(11): 1786-91
9. Morris BW et al. Chromium homeostasis in patients with type II (NIDDM) diabetes. *J Trace Elem Med Biol* 1999;13(1-2):57-61
10. Ghosh D et al. Role of chromium supplementation in Indians with type 2 diabetes mellitus. *J Nutr Biochem.* 2002 Nov; 13(11): 690-697.
11. Zhang H et al. A high biotin diet improves the impaired glucose tolerance of long-term spontaneously hyperglycemic rats with non-insulin-dependent diabetes mellitus. *J Nutr Sci Vitaminol (Tokyo)* 1996; 42(6):517-26
12. Cohen N et al. Oral vanadyl sulfate improves hepatic and peripheral insulin sensitivity in patients with non-insulin-dependent diabetes mellitus. *J Clin Invest* 1995; 95(6):2501-9
13. Halberstam M, Cohen N, Shlimovich P, Rossetti L, Shamoon H. Oral vanadyl sulfate improves insulin sensitivity in NIDDM but not in obese nondiabetic subjects. *Diabetes* 1996; 45(5):659-66
14. Cusi K et al. Vanadyl sulfate improves hepatic and muscle insulin sensitivity in type 2 diabetes. *J Clin Endocrinol Metab* 2001; 86(3):1410-7
15. Baskaran K et al. Antidiabetic effect of a leaf extract from *Gymnema sylvestre* in non-insulin-dependent diabetes mellitus patients. *J Ethnopharmacol* 1990; 30(3):295-300
16. Shanmugasundaram ER et al. Use of *Gymnema sylvestre* leaf extract in the control of blood glucose in insulin-dependent diabetes mellitus. *J Ethnopharmacol* 1990; 30(3):281-94
17. Singer GM, G eohas J. The effect of chromium picolinate and biotin supplementation on glycemic control in poorly controlled patients with type 2 diabetes mellitus: a placebo-controlled, double-blinded, randomized trial. *Diabetes Technol Ther.* 2006; 8(6): 636-43.
18. Ziegenfuss TN et al. The effects of a proprietary aqueous cinnamon extract on glucose regulation, lipid profiles, and body composition in prediabetic men and women. *Integrity Nutraceuticals.*

ChromeMate® is a registered trademark of InterHealth N.I.

ChromeMate® brand niacin-bound chromium (U.S. Patents 4,923,855, 4,954,492 and 5,194,615).

Cinnulin™ is a trademark of Integrity Nutraceuticals International.

